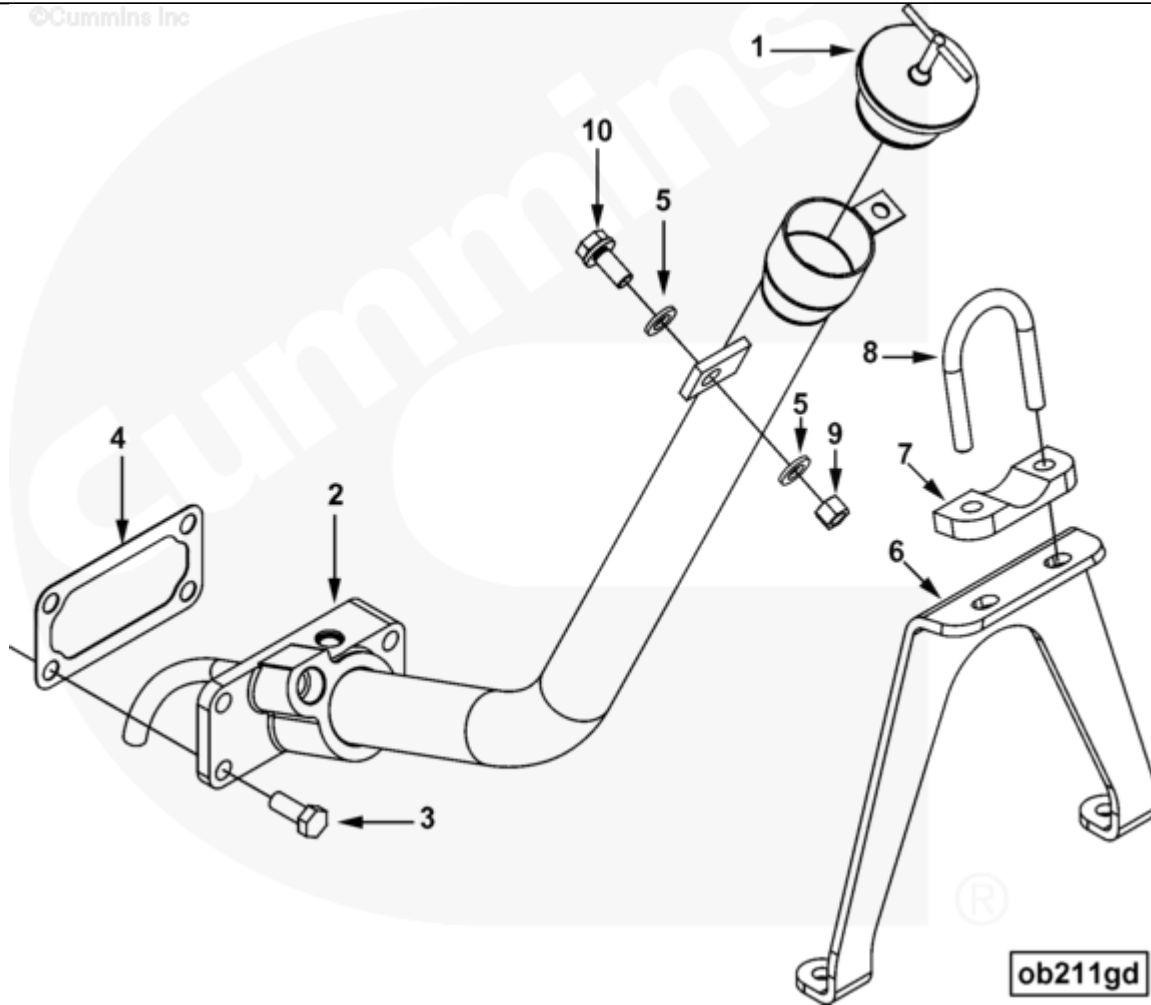




## Parts Catalog - Option Detail

Electronic Parts Catalog - Option Detail				
Option	Group	Graphic	Film Card	Date
OB2736-02	07.02	ob211gd	II	12-JAN-09
<b>Engines</b>	ISM CM570, ISM CM570/870, ISM CM875, ISM CM876, ISM CM876 E, ISM11 CM876 M103, ISM11 CM876 SN, M11 CELECT, M11 CELECT PLUS, M11 MECHANICAL, QSM11 CM570, QSM11 CM876			



SMALL | MEDIUM | LARGE

Cart	Ref No	Part Number	Part Description	Required	Remarks
View My Cart					
		OB2736-02	Hand Hole Cover		MR - COVER, HAND HOLE...(More)
					Engine Family: M11
					Left Side Dipstick Provision:
					Yes

					Dipstick Tube Attachment
					Method: 3/4-16 UNF
					Left Side Oil Fill
					Provision: Yes
					Brace to Block Holes #329 and
					#330
					Left Side Oil Return
					Provision: None
					Centinel Provision: No
					Oil Fill Tube Length from
					Hand Hole Cover Mounting
					Surface: 269.4mm (10.61 in.)
					Dipstick Guide Tube Horiz
					Distance: 108.9mm (4.29 in.)
					Unique Characteristics:
					Lockable Oil Fill Cap
					Oil Fill Support Mounting
					Location: Block Hole #330
					and WR Options that Provide
					Mounting for Block Hole #329
					Acceptable for applications
					which experience high g loads
					such as bulldozers.
<input type="checkbox"/>	1	3048553	Filler Cap	1	
<input type="checkbox"/>	2	3104152	Hand Hole Cover	1	
<input type="checkbox"/>	3	3335044	Hexagon Head Cap Screw	4	M10 x 1.50 x 25.
<input type="checkbox"/>	4	2871314	Hand Hole Gasket	1	
<input type="checkbox"/>	5	3009330	Plain Washer	2	M10.

<input type="checkbox"/>	6	<a href="#">3104155</a>	Tube Brace	1	
<input type="checkbox"/>	7	<a href="#">3161582</a>	Tube Clamp	1	
<input type="checkbox"/>	8	<a href="#">3161770</a>	U-Bolt	1	
<input type="checkbox"/>	9	<a href="#">3175239</a>	Lock Nut	1	
<input type="checkbox"/>	10	<a href="#">3818060</a>	Captive Washer Cap Screw	1	M10 X 1.50 X 25.

© 2019 Cummins Inc., Box 3005, Columbus, IN 47202-3005 U.S.A.  
Terms of Use and Disclaimers | Recommended System Requirements  
Need Assistance? Please click on the Contact Us button in the top right corner of any page.